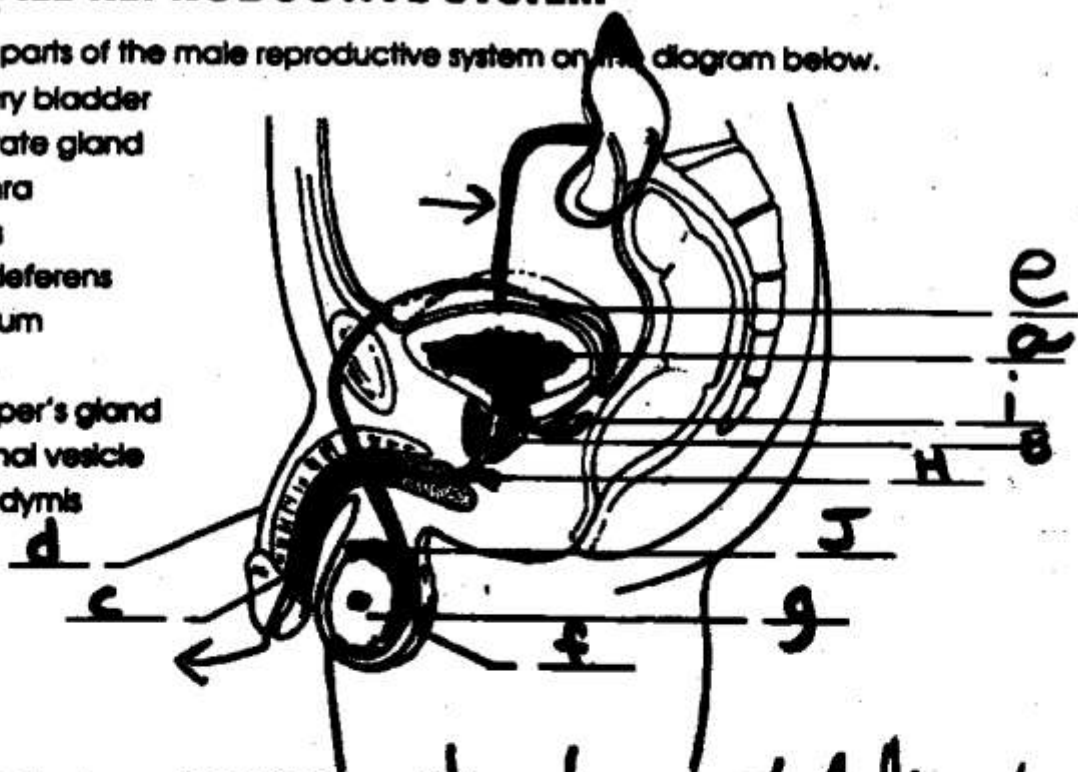


THE MALE REPRODUCTIVE SYSTEM

Name _____

Label the parts of the male reproductive system on the diagram below.

- urinary bladder
- prostate gland
- urethra
- penis
- vas deferens
- scrotum
- testis
- Cowper's gland
- seminal vesicle
- epididymis



*** Know sperm structure labelling, too!!**

Fill in the blanks with the correct answers.

meiosis occurs in the **testes** producing sperm with 23 **chromosomes**. Each human sperm cell has **three** parts—a head, a middle region and a **tail**. The head contains the **nucleus** with the **chromosomes**. The acrosome at the tip of the head enables the sperm to **penetrate** the **egg**. The middle region contains the **mitochondria**, which produce energy. The tail, a long and slender **flagellum**, moves the sperm.

The testes are housed in the **scrotum**. From the testes, sperm passes through the **epididymis**, which is a storage and maturation area, to the **vas deferens** where they are housed until delivery. The **prostate gland** at the base of the urethra secretes a fluid that has a stimulating effect on the sperm. During intercourse, they travel to the **urethra**, where the reproductive and urinary tracts join, emptying through the **penis**. An adult male produces **sperm** continuously, several hundred million each day of his life. Those that are not ejaculated from the body are **reabsorbed** in a continual cycle of renewal.