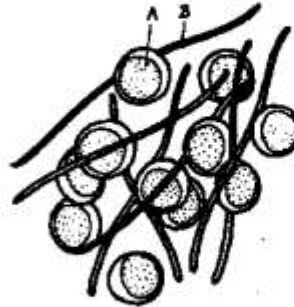
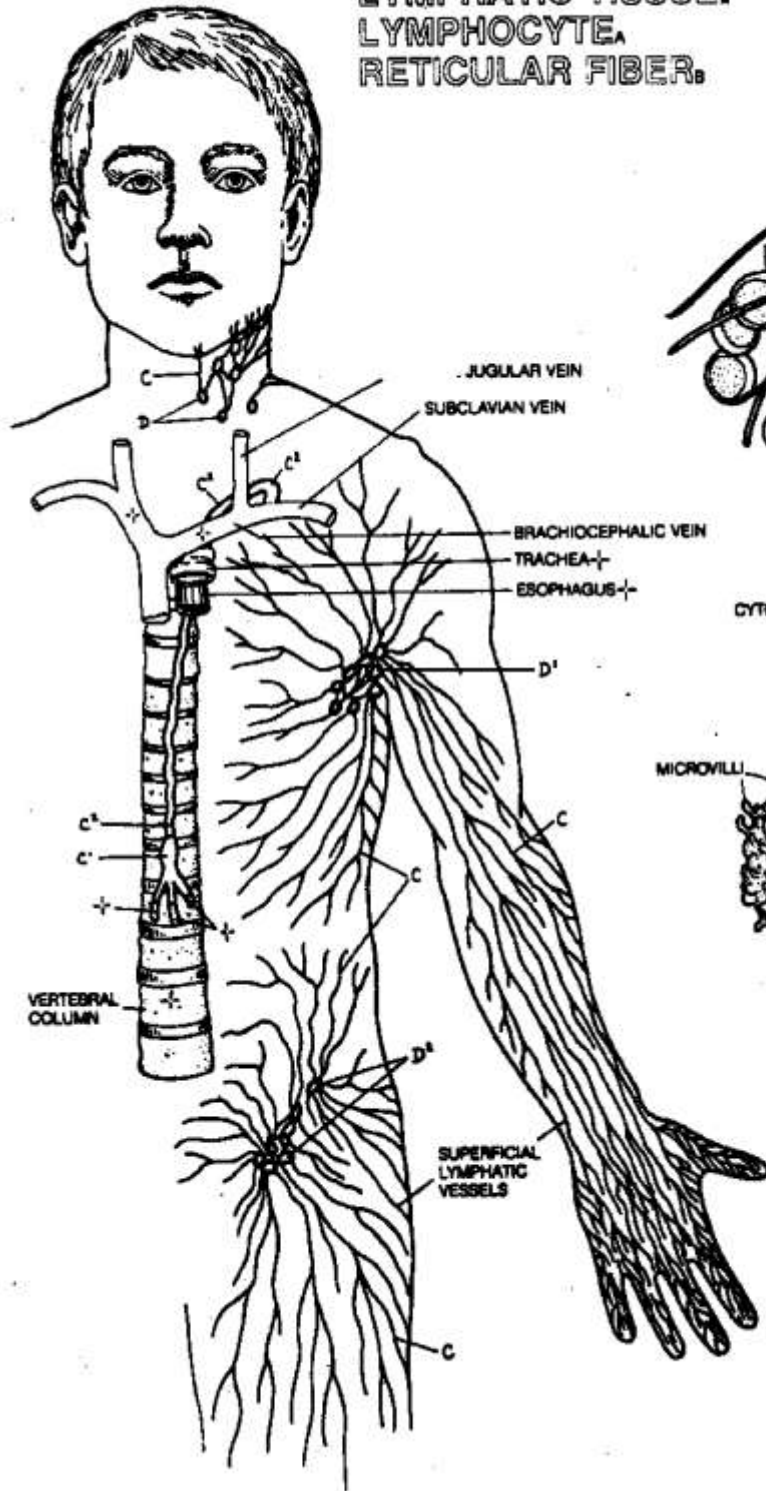


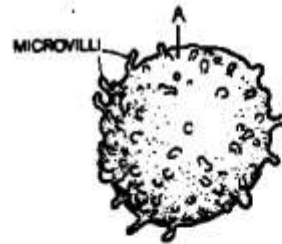
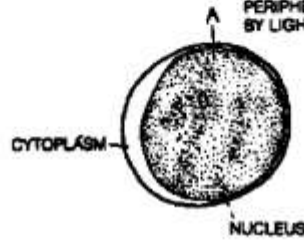
LYMPHATIC SYSTEM I.

LYMPHATIC SYSTEM I

LYMPHATIC TISSUE.
LYMPHOCYTE.
RETICULAR FIBER.



AS SEEN IN A PERIPHERAL BLOOD SMEAR BY LIGHT MICROSCOPY



AS SEEN BY SCANNING ELECTRON MICROSCOPY

LYMPHATIC VASCULAR SYSTEM.
VESSELS.
LYMPH NODE.